

SETTING UP YOUR COMPUTER

creating user profile and saving data to your account



HEARING SAFETY

Where am I now?

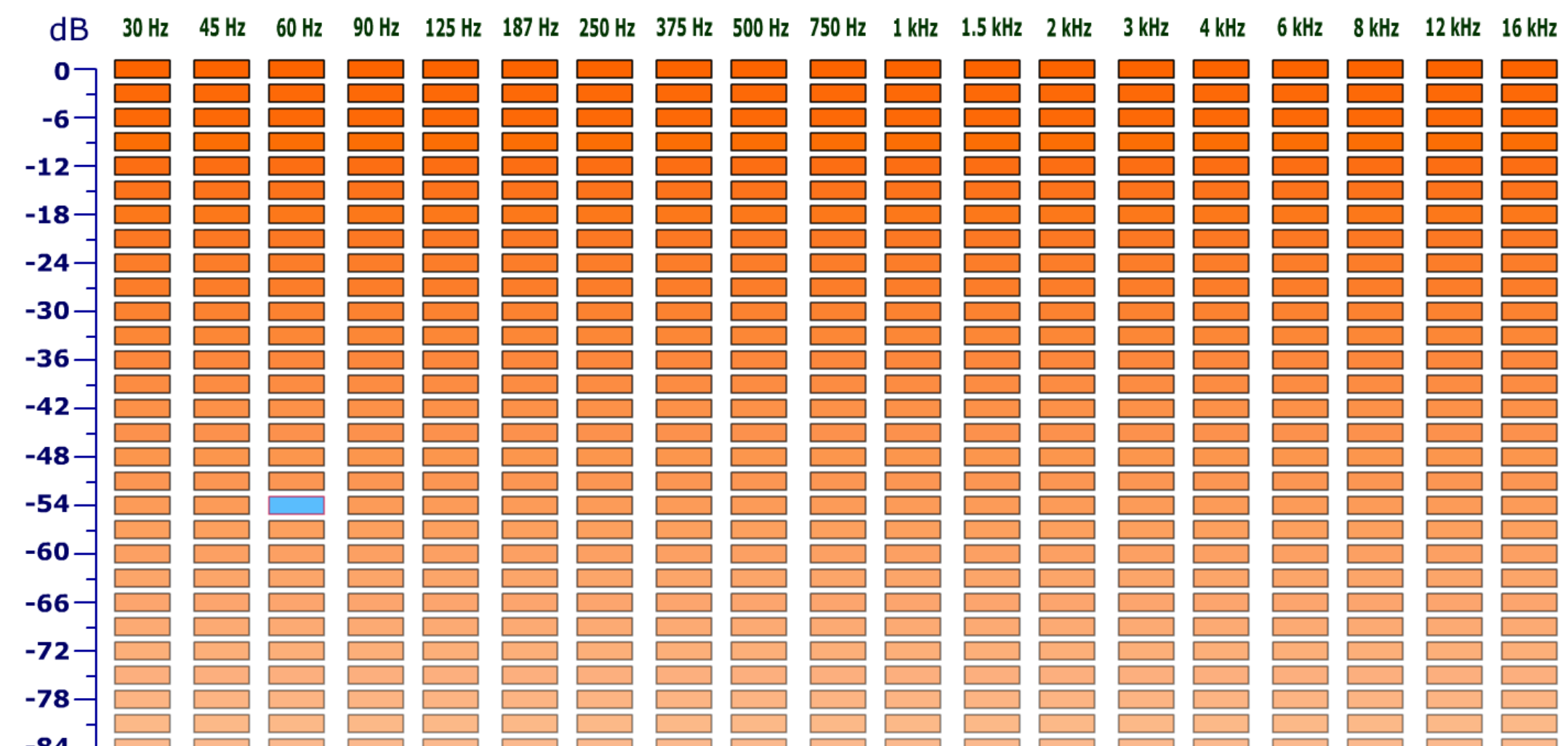
INTERACTIVE ASSIGNMENT

Lets visit the University of New South Whales.

Complete the interactive hearing test and save the outcome to your account.

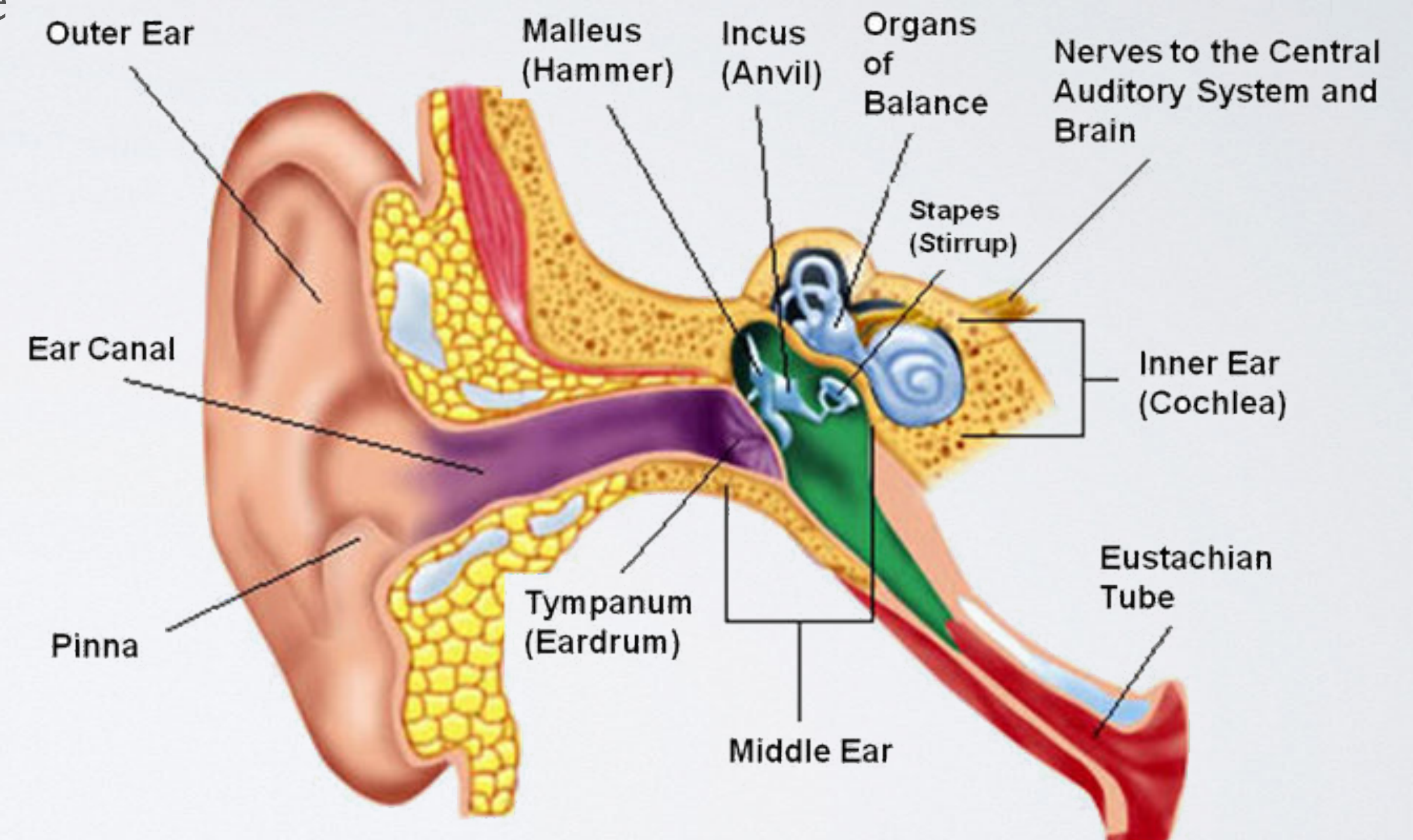
The **instructions** for using this service are given below the graphic. **Repeat: do not start in the top third of the chart.**

Source: <http://www.phys.unsw.edu.au/~jw/hearing.html>



PARTS OF THE EAR

- This diagram will show you the the various parts of the human ear. The health of each part of the ear is vital to the quality of sound in which we hear.
- Take a few minutes to acquaint yourself with the diagram as the following slide and video will begin to discuss in more detail.
- TAKE CARE OF YOUR EARS, THEY ARE THE ONLY ONES YOU GET!



HOW DOES THE EAR WORK?

Before you begin watching the following video, be sure to have a copy of the Unit worksheet titled “Worksheet - Ears”

Follow along with the video and answer the corresponding questions related to the video.

https://www.youtube.com/watch?v=WOgl5IAR_bQ

COMMON CAUSES OF HEARING DAMAGE

Before continuing, be sure to complete the Part I section of the worksheet.

In this current day of accessibility, more and more teenagers are developing hearing loss. With today's technology and medical advances, how is this possible? Ask yourself the question, "Can I be the problem".

https://www.youtube.com/watch?time_continue=120&v=g9G3kWBQGmQ

WHAT CAN BE DONE TO PROTECT MYSELF!

I love listening to loud music. Listen to your ears, they will tell you everything you need to know.

<https://www.youtube.com/watch?v=IJI-i7Xn0A8>

WHAT IS A HEALTHY EAR?

Your ears can indicate your health.

<https://www.youtube.com/watch?v=a2-6F2zOk30>

COMPLETE WORKSHEET

Terminology - Part 2